

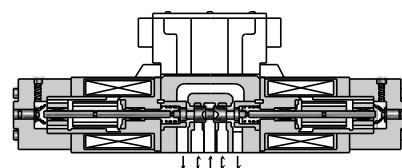
These valves incorporate two control functions - flow and direction - which simplify the hydraulic circuit composition and therefore the cost of the system is reduced.



Specifications

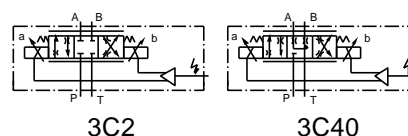
Model Numbers		EHDFG-01	EHDFG-03
Description			
Max. Operating Pressure	MPa (PSI)	24.5 (3550)	24.5 (3550)
Max. Tank Line Back Pres.	MPa (PSI)	7 (1020)	7 (1020)
Rated Flow	L/min (U.S.GPM) [Valve \angle P 6.9 MPa (1000 PSI)]	30 (7.92)	60 (15.9)
Hysteresis		Less than 5%	
Repeatability		Less than 1%*	
Frequency Response		20 (-90 deg.) Hz	17 (-90 deg.) Hz
Coil Resistance		10.5 Ω	8.0 Ω
Supply Electric Power		24 VDC (21 to 28 V DC Included Ripple)	
Input Voltage	By Controlling Variable Resistance (Using of Power from Amp.)	1 - 2 k Ω Volume Range	
	By Controlling Voltage (Using of Power outside Amp.)	0 ~ -5 V for SOL a 0 ~ +5 V for SOL b	
Input Impedance		10 k Ω	10 k Ω
Power Input (Max.)		40 W	45 W
Ambient Temperature		0 - 50 $^{\circ}$ C (32 - 122 $^{\circ}$ F) (With Circulated Air)	

* The repeatability of the valves is obtained by having it tested independently on the conditions similar to its original testing.



Graphic Symbols

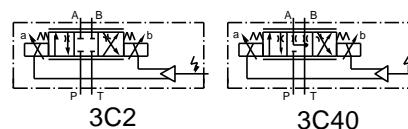
● Metre-in ? Metre-out Control



3C2

3C40

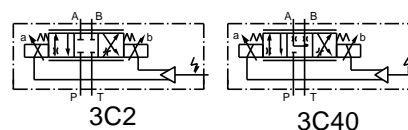
● Metre-out Control



3C2

3C40

● Metre-in Control



3C2

3C40

Model Number Designation

EHDFG	-01	-30	-3C2	-E	-30
Series Number	Valve Size	Rated Flow L/min (U.S.GPM)	Spool Type*	Direction of Flow	Design Number
EHDFG: Proportional Electro-Hydraulic Directional and Flow Control Valve (Sub-Plate Mounting)	01	30 : 30 (7.92)	3C2	XY : Metre-in · Metre-out	30
	03	60 : 60 (15.9)	3C40	X : Metre-in Y : Metre-out	30

* Spool type shown in the column is for the centre position.