

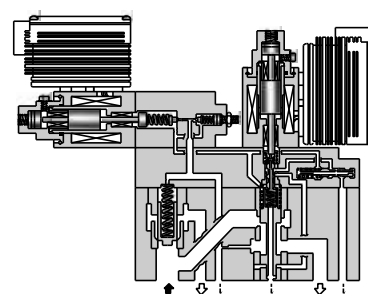
These are proportional electro-hydraulic flow control valves having functions for controlling the direct electric current of metre-in type and for pressure control. They are energy-saving valves for supplying the minimal pressure and flow required to operate actuators.



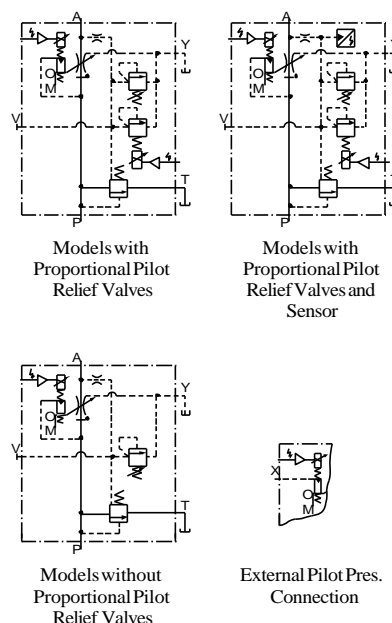
Specifications

Model Numbers		EHFBG-03-60 125	EHFBG-06-250	EHFBG-10-500
Description				
Max. Operating Pressure MPa (PSI)		24.5 (3550)	24.5 (3550)	24.5 (3550)
Max. Flow L/min (U.S.GPM)		60 : 60 (15.8) 125 : 125 (33)	250 (66)	500 (132)
Metred Flow Capacity L/min (U.S.GPM)		60 : 1-60 (.26-15.8) 125 : 1-125 (.26-33)	2.5-250 (.66-66)	5-500 (13.2-132)
Min. Pilot Pressure MPa (PSI)		1.5 (215)	1.5 (215)	1.5 (215)
Pilot Flow L/min (U.S.GPM)	at Normal	1 (.26)	1 (.26)	1 (.26)
	at Transition	3 (.79)	4 (1.06)	6 (1.59)
Differential Pressure MPa (PSI)		0.6 (85)	0.7 (100)	0.9 (130)
Flow Controls	Hysteresis	Less than 3%		
	Repeatability	Less than 1% ★		
	Input Signal	Max. Flow / 5 V DC		
	Coil Resistance	10 Ω		
	Supply Electric Power	24 V DC (21 to 28 V DC Included Ripple)		
	Input Impedance	10 k Ω		
	Power Input (Max.)	28 W		
Pressure Controls	Pres. Adj. Range MPa (PSI)	Adj. Range: C 1.2-15.7 (175-2275)	1.4-15.7 (200-2275)	1.5-15.7 (215-2275)
		Adj. Range: H 1.4-24.5 (200-3550)	1.4-24.5 (200-3550)	1.5-24.5 (215-3550)
	Hysteresis	Less than 2%		
	Repeatability	Less than 1% ★		
	Coil Resistance	10 Ω		
	Input Signal	Max. Operating Pres. / 5 V DC		
	Supply Electric Power	24 V DC (21 to 28 V DC Included Ripple)		
	Input Impedance	10 k Ω		
	Power Input (Max.)	28 W		
	Output Signal	C : 5 V DC / 5.7 MPa (2275 PSI) H : 5 V DC / 24.5 MPa (3550 PSI)		
Ambient Temperature		0 - 50°C (32 - 122°F) (With Circulated Air)		

★ The repeatability of the valves is obtained by having it tested independently on the conditions similar to its original testing.



Graphic Symbols



Model Number Designation

EHFB	G	-03	-60	-C	-E	-S	D	-50
Series Number	Type of Mounting	Valve Size	Max. Metred Flow L/min (U.S.GPM)	Pilot Relief Valve Pres. Adj. Range	Pilot Connection of Flow Control	Pressure Controls	DPM of Pres.★	Design Number
EHFB : Proportional Electro-Hydraulic Flow Control and Relief Valve	G : Sub-Plate Mounting	03	60 : 60 (15.8) 125 : 125 (33)	None : Without Proportional Pilot Relief Valve C, H : See Specifications	None : Internal Pilot E : External Pilot	None : Open-Loop S : Open-Loop with Sensor	None : Without DPM D : With DPM	50
		06	250 : 250 (66)					50
		10	250 : 500 (132)					50

★ DMP is available only for the models with Pressure Controls "S".